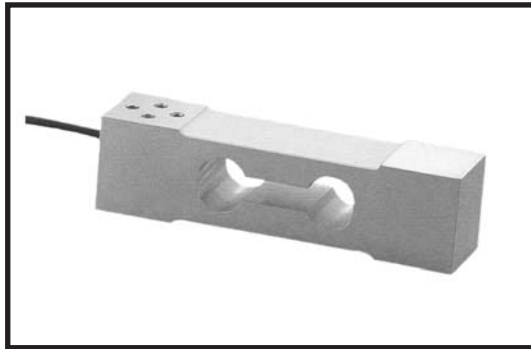




FAS Single Point, Aluminum



CAPACITY MODEL

| | |
|-------|-----------|
| 10kg | FAS-10kg |
| 20kg | FAS-20kg |
| 30kg | FAS-30kg |
| 50kg | FAS-50kg |
| 75kg | FAS-75kg |
| 100kg | FAS-100kg |

DESCRIPTION

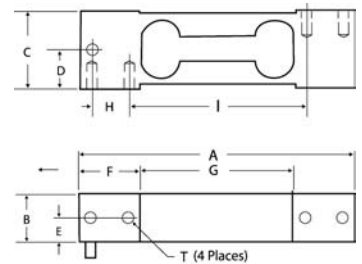
PRICE LIST

Single Point Aluminum Load Cells (Equivalent to Rice Lake RL 1040 & Teda 1040)

- 10, 20, 30, 50, 75, 100kg capacities \$135.00

DIMENSIONS:

| CAPACITY | | A | B | C | D | E | F | G | H | I | T |
|--------------|-----|------|------|------|------|------|------|------|------|------|-------------|
| 10kg - 100kg | in. | 5.91 | 0.94 | 1.57 | 0.79 | 0.47 | 1.18 | 3.15 | 0.75 | 3.94 | 1/4"-20 UNC |
| | mm. | 150 | 25 | 38 | 20 | 12.5 | 34 | 80 | 19 | 100 | |



SPECIFICATIONS:

| | |
|-------------------------|-----------------------------------|
| Full Scale Output: | 2.0mV/V ± 10% |
| Creep after 20 minutes: | 0.02% of FS output |
| Total Error: | 0.02% of FS output |
| Safe Overload: | 1.5 x rated capacity |
| Insulation Resistance: | >5000 MΩ |
| Temp. Compensated: | 14°F to 120°F (-10°C to +50°C) |
| Input Impedance: | 400Ω ± 30Ω |
| Output Impedance: | 350Ω ± 3Ω |
| Rated Excitation: | 10V DC/AC |
| Maximum Excitation: | 20V DC/AC |
| Cable Length: | 10 feet |

SCHEMATIC:

