

## Model DBCM Series

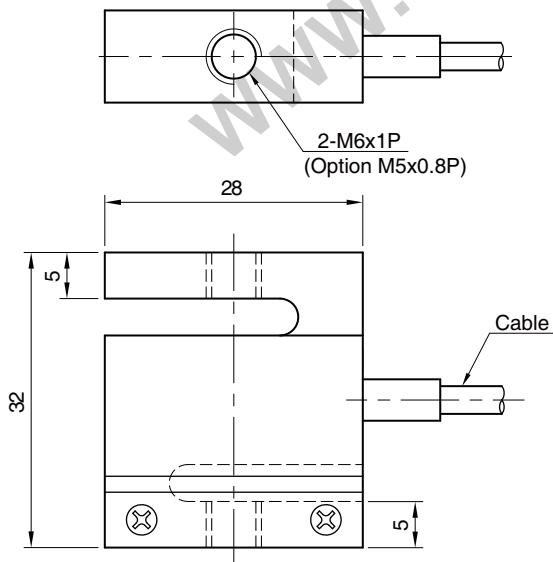
Tension & Compression  
Miniature Load Cell (10kg ~ 100kg)

- High accuracy(1/2000)
- Sealded to IP64



### SPECIFICATIONS

MODEL	DBCM	
Rated capacity (R.C.)	10, 20, 30kg	50, 100kg
Material	Aluminum	Stainless Steel
Rated output(R.O.)	2.0mV/V ± 10%	
Non-linearity	≤0.05% R.O.	
Hysteresis	≤0.05% R.O.	
Non-repeatability	≤0.03% R.O.	
Creep error	≤0.05% in 20min.	
Zero balance	≤1% R.O.	
Compensated temperature range	-10 ~ 70°C	
Operating temperature range	-20 ~ 80°C	
Temp. effect on rated output	≤0.03% LOAD/10°C	
Temp. effect on zero balance	≤0.03% R.O./10°C	
Terminal input resistance	420 ±20 Ohms	400 ±20 Ohms
Terminal output resistance	350 ±5 Ohms	350 ±5 Ohms
Insulation resistance (Min.)	2000 MOhms at 50V DC	
Excitation voltage	5V(Recommended), 10V(Max.)	
Electrical connection	ø3mmx1.5m(28AWG x 4Core Shielded)	
Protection class	meets IP 64	
Safe overload	150% R.C	
Ultimate overload	300% R.C	

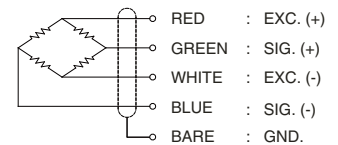


### ORDERING INFORMATION

**DBCM - 50**

MODEL      CAPACITY  
DBCM      10, 20, 30, 50, 100kg

### WIRING INFORMATION



Dimension-mm

\* Specifications are subject to change without notice

AUG, 2012