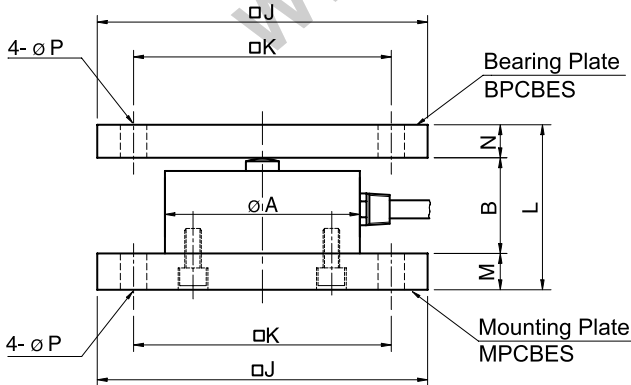
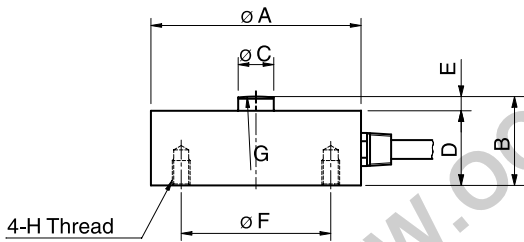
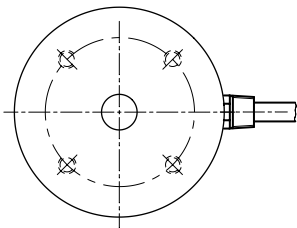


Model CBES Series

Compression

Low Profile Load Cell (50kg ~ 20t)



The model CBES miniature type is designed for low profile compression service.

Its compact size makes the cell ideal for a wide range of applications including testing & weighing systems.

- 17-4PH Stainless steel construction.
- Fully welded seal with stainless steel cover for hostile environment applications.
- Compact size with low profile.

SPECIFICATIONS

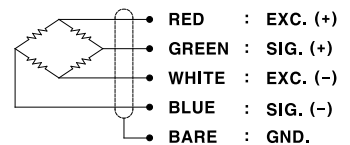
MODEL	CBES
Rated capacity (R.C.)	50, 100, 200, 500kg 1, 2, 3, 5, 10, 20t
Rated output(R.O.)	2mV/V \pm 0.25%
Non-linearity	\leq 0.1% R.O.
Hysteresis	\leq 0.1% R.O.
Non-repeatability	\leq 0.1% R.O.
Creep error	\leq 0.03% in 20min.
Zero balance	\leq 1% R.O.
Compensated temperature range	-10 ~ 70°C
Operating temperature range	-20 ~ 80°C
Temp. effect on rated output	\leq 0.05% LOAD/10°C
Temp. effect on zero balance	\leq 0.05% R.O./10°C
Terminal input resistance	700 Ohms \pm 10 Ohms
Terminal output resistance	700 Ohms \pm 10 Ohms
Insulation resistance (Min.)	2000 MOhms at 50V DC
Excitation voltage	10V(Recommended), 15V(Max.)
Electrial connection (50kg ~ 2t)	ϕ 5mmx3m(22AWG x 4Core Shielded)
(3t ~20t)	ϕ 7mmx5m(22AWG x 4Core Shielded)
Protection class	meets IP 67
Safe overload	150% R.C
Ultimate overload	300% R.C

ORDERING INFORMATION

CBES - 10T

MODEL	CAPACITY
CBES	50, 100, 200, 500kg. 1, 2, 3, 5, 10, 20ton

WIRING INFORMATION



Dimension-mm

Capacity	A	B	C	D	E	F	G	H	J	K	L	M	N	P	Bearing Plate	Mounting Plate	Weight(kg)
50kg ~ 2t (490.3N ~ 19.61kN)	59	25	10	21	4	42	R50	M5x0.8P Depth 7	100	78	55	15	15	8	BPCBES-1	MPCBES-1	0.35
3t ~ 10t (29.42kN ~ 98.07kN)	98	45	20	40	5	72	R150	M6x1P Depth 8	160	126	105	30	30	14	BPCBES-2	MPCBES-2	2.3
20t (196.1kN)	118	50	20	45	5	90	R250	M8x1.25P Depth 15	160	126	110	30	30	14	BPCBES-3	MPCBES-3	3.7

* Specifications are subject to change without notice

DEC, 2005