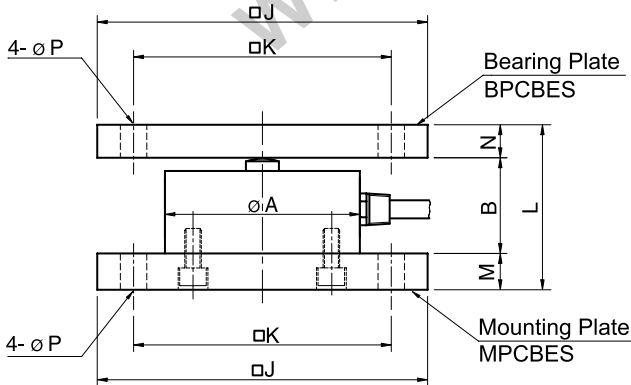
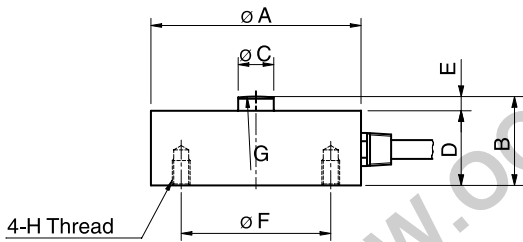
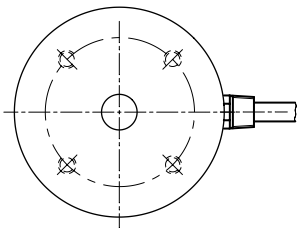


## Model CBES Series

Compression

Low Profile Load Cell (50kg ~ 20t)



The model CBES miniature type is designed for low profile compression service.

Its compact size makes the cell ideal for a wide range of applications including testing & weighing systems.

- 17-4PH Stainless steel construction.
- Fully welded seal with stainless steel cover for hostile environment applications.
- Compact size with low profile.

### SPECIFICATIONS

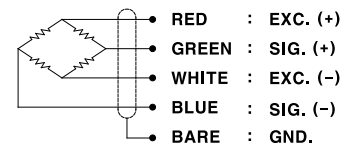
| MODEL                            | CBES                                       |
|----------------------------------|--------------------------------------------|
| Rated capacity (R.C.)            | 50, 100, 200, 500kg<br>1, 2, 3, 5, 10, 20t |
| Rated output(R.O.)               | 2mV/V $\pm$ 0.25%                          |
| Non-linearity                    | $\leq$ 0.1% R.O.                           |
| Hysteresis                       | $\leq$ 0.1% R.O.                           |
| Non-repeatability                | $\leq$ 0.1% R.O.                           |
| Creep error                      | $\leq$ 0.03% in 20min.                     |
| Zero balance                     | $\leq$ 1% R.O.                             |
| Compensated temperature range    | -10 ~ 70°C                                 |
| Operating temperature range      | -20 ~ 80°C                                 |
| Temp. effect on rated output     | $\leq$ 0.05% LOAD/10°C                     |
| Temp. effect on zero balance     | $\leq$ 0.05% R.O./10°C                     |
| Terminal input resistance        | 700 Ohms $\pm$ 10 Ohms                     |
| Terminal output resistance       | 700 Ohms $\pm$ 10 Ohms                     |
| Insulation resistance (Min.)     | 2000 MOhms at 50V DC                       |
| Excitation voltage               | 10V(Recommended), 15V(Max.)                |
| Electrial connection (50kg ~ 2t) | $\phi$ 5mmx3m(22AWG x 4Core Shielded)      |
| (3t ~20t)                        | $\phi$ 7mmx5m(22AWG x 4Core Shielded)      |
| Protection class                 | meets IP 67                                |
| Safe overload                    | 150% R.C                                   |
| Ultimate overload                | 300% R.C                                   |

### ORDERING INFORMATION

#### CBES - 10T

| MODEL | CAPACITY                                      |
|-------|-----------------------------------------------|
| CBES  | 50, 100, 200, 500kg.<br>1, 2, 3, 5, 10, 20ton |

### WIRING INFORMATION



### Dimension-mm

| Capacity                        | A   | B  | C  | D  | E | F  | G    | H                    | J   | K   | L   | M  | N  | P  | Bearing Plate | Mounting Plate | Weight(kg) |
|---------------------------------|-----|----|----|----|---|----|------|----------------------|-----|-----|-----|----|----|----|---------------|----------------|------------|
| 50kg ~ 2t<br>(490.3N ~ 19.61kN) | 59  | 25 | 10 | 21 | 4 | 42 | R50  | M5x0.8P<br>Depth 7   | 100 | 78  | 55  | 15 | 15 | 8  | BPCBES-1      | MPCBES-1       | 0.35       |
| 3t ~ 10t<br>(29.42kN ~ 98.07kN) | 98  | 45 | 20 | 40 | 5 | 72 | R150 | M6x1P<br>Depth 8     | 160 | 126 | 105 | 30 | 30 | 14 | BPCBES-2      | MPCBES-2       | 2.3        |
| 20t<br>(196.1kN)                | 118 | 50 | 20 | 45 | 5 | 90 | R250 | M8x1.25P<br>Depth 15 | 160 | 126 | 110 | 30 | 30 | 14 | BPCBES-3      | MPCBES-3       | 3.7        |

\* Specifications are subject to change without notice

DEC, 2005